

# WOODNEWTON NEWS

JANUARY 2017

WHO IS THIS EVIL VILLAIN COMING TO  
WOODNEWTON AND WHO CAN SAVE US?



SEE BACK COVER TO MEET THE HEROES OF THIS  
YEAR'S PANTOMIME:  
DICK WHITTINGTON AND HIS CAT

[www.woodnewtonhub.co.uk](http://www.woodnewtonhub.co.uk)

# News and Reports

**The Parish Council** met on 5<sup>th</sup> December

## **Public Time**

- 1 resident attended to express disappointment about the removal of the produce stall.
- 2 residents attended in support of a planning application

## **Parish Clerk**

Jill Sardeson was appointed a Clerk and RFO to the Council. Jill is an experienced Parish Clerk and we welcome her appointment.

## **Planning**

2 applications, both involving development beyond the village development boundary were returned with objections. The Council continues to work hard to protect the environs of the village and maintain the shape and structure of the village as we know it.

## **Village Website**

The Village website will come under the responsibilities of the Clerk. The Council is investigating a grant fund that enables the website to be updated regularly.

## **Playground Project**

Grant applications have been made for the playground project following a canvass of support among residents and users.

## **Churchyard trees**

A report on the condition of the 3 large trees in the Churchyard has been obtained and a quote for the work recommended. The Council is consulting with the ENC tree officer.

## **2017**

By the time you read this, all the Christmas festivities will be over and we will be looking forward to the new year that lies ahead. For your Parish Council, 2017 will represent a challenge as we face ever increasing costs. The Council will continue to try and maintain the village in a condition that makes it a place we all want to live in and enjoy. We still have a vacancy for a Councillor so if you feel you would like to join in then please come and see us.

On behalf of the Council, I wish you all a happy new year.

The next Parish Council meeting will be on Monday 9<sup>th</sup> January @ 8.00pm

Andrew Hansford - Parish Council Chairman

## Woodnewton Neighbourhood Watch

### COLD WEATHER ADVICE

#### Defrosting your car

During the cold weather, motorists are advised to make sure their car is fully defrosted before starting any journey. However, motorists should never leave their vehicle unattended with the engine running to warm it up or defrost the windows. Thieves can target residential areas on cold and frosty mornings looking for cars where the owner has started the engine to defrost the windows and then returned inside, leaving the car unattended. Motorists should also be aware that some motor insurance policies become invalid if a vehicle is stolen as a result of keys being left in the ignition. Always remove keys from the ignition, even if you are just leaving your car for a few moments. It only takes a thief a few seconds to jump in and drive away. Cover your windscreen the night before a frost is forecast. This will make it easier to clear the windscreen in the morning. Make sure you allow yourself more time for your journey. Frost on cars also means the roads could be icy and make driving more difficult.

#### Get Ready for Winter

The Met Office campaign “Get Ready for Winter” aims to help raise awareness of the dangers posed by winter weather and provide advice on how to minimise its impact. It provides advice on: Travel; Your Home; and Staying Warm. The campaign is run and implemented by the Met Office on behalf of a number of Government Departments with support from charities and other community based organisations. To find out more about how to prepare for winter head to the Met Office’s Get Ready for Winter website: <http://www.metoffice.gov.uk/get-ready-for-winter>.

## St Mary’s Church

### Sunday Services

1 <sup>st</sup>	No service at Woodnewton	9.30 – HC at Nassington 11am – HC at Apethorpe
8th	Morning Prayer	9.30am
15th	Sung CW Holy Communion	9.30am
22nd <sup>h</sup>	Said BCP Holy Communion	8.30am
29 <sup>th</sup>	Benefice service at Apethorpe	10am

### SECOND HAND BOOKS

The book stall within the church has very many new titles: a good supply to keep you in books over the dark months. Books only 50p or 3 for £1. Month to be placed in gift box on column. Church open between 10am and 4pm., during the winter months.

## CLOWNFEST

For those of you who were resident in the village in 1990, I am sure you will remember the first clown celebration that we held to boost the fundraising for a village hall to be built. We were lucky to play host to a huge number of clowns, two of whom took major roles in the day: Rev Roly Bain and Pierre Picton.



Revd Roly Bain presided over the memorial service around Coco's grave side and then entertained the children on his slack rope. He came back to Woodnewton on October 2014 for Coco's memorial service.

Pierre Picton brought with him his famous car, CHITTY CHITTY BANG BANG. He took part in the procession and then gave the children rides in his car.



Over the last few months, both these clowns have left us for pastures new. To view their obituaries go to: <https://www.theguardian.com/culture/2016/aug/21/the-rev-roly-bain-obituary> and [www.telegraph.co.uk > Obituaries](http://www.telegraph.co.uk/Obituaries)

## Communicare

The quarterly patients' general meeting was held on 30th November when the main agenda item was a question and answer session regarding future plans for the practice. Dr Nally was extremely forthcoming about her and Dr Takhar's thinking on what might be the right way to take the practice forward – there are several options under consideration - staying within the Peterborough and surrounding area network, joining the super practice now operating at Lakeside Corby, or for the moment remaining

as they are until the best outcome becomes clearer. There were obviously concerns expressed about how and where primary care would be delivered, but she was adamant that patients would not be affected by any future changes and would continue to access secondary care at both Peterborough and Stamford hospitals. She also stressed the possible advantages which could evolve from the practice joining forces with other organisations. It would appear that no firm decision will be made until the middle of next year. Drs Takhar and Nally greatly value patient views and would welcome any comments and thoughts you may have.

Other matters discussed included our voluntary transport scheme which unfortunately has now come to the 'end of the road'. Lack of drivers, the necessity for DBS checks, the organisational workload being placed on surgery reception staff, as well as burdening the small number of available drivers with numerous requests has prompted this decision. After many years operation it is a sad but inevitable course of action. However it is hoped that patients will benefit from extended surgery opening hours and the ability to have appointments at other practices at times when they can organise transport with family or friends.

The PPG have agreed to fund the purchase of an INR machine for use both in the surgery but mainly for district nurses to take out to housebound patients to monitor their blood levels in respect of administering warfarin medication.

The next general patients' meeting is scheduled for Wednesday 8th March 2017 at 1.0pm – at Wansford Surgery – in line with our usual winter programme we are holding this meeting during the daytime to allow older patients to attend who may not like to venture out at night. We hope to organise a guest speaker – details will be announced at a later date.

There is no social group coffee morning in January – these will commence again in February. The group will be holding their post-Xmas lunch on Friday 13th January at Yarwell Village Hall – places have already been booked but if you require further information please contact Clare Wagstaffe 01780 470437 / [superfoguk@aol.com](mailto:superfoguk@aol.com)

## **VOLUNTARY TRANSPORT SCHEME**

### **IMPORTANT NOTICE**

It is with regret that a decision has been made to terminate the transport scheme with effect from 1st January 2017.

Over the past few years it has become increasingly difficult to recruit new volunteer drivers and current legislation requiring all those participating to be DBS checked, has also had an impact on the number of drivers wishing to continue their involvement.

With contraction of the scheme, the daily organisation of identifying drivers to allocate for patients' needs is now placing too large a burden on the surgery reception staff. The

few remaining drivers are also having to bear an unacceptable number of requests.

We acknowledge that the loss of the scheme will adversely affect some patients, but with new services to allow patients to arrange appointments within extended surgery opening hours at other practices in and around the local area, we hope these will help with organising transport from other sources. Requests for hospital based transport can also be made to the relevant location prior to attendance.

We would like to express our sincere thanks to all those who, over the years, have loyally supported and given their time so generously for the successful operation of the scheme.

## **Rats**

There have been two rat infestations in Pridmore Close in the last 6 months. Both have been treated by the Council's pest controller and the Council may take further action in the area to control rats.

Rats are a major health hazard. A variety of human and livestock diseases are spread through contact with rat urine and excrement or contaminated food and water including Weil's Disease, a severe form of leptospirosis that can infect the tiniest scratch and can be fatal. Other diseases include Salmonella food poisoning, Typhus, Trichinosis from parasitic roundworm, and tapeworms. One rat can produce more than 40 droppings a day and a gallon of urine per year. Rats can infest any property or location that provides an adequate source of food and water. They are attracted to chicken coops, bird feeders and barbeques where they can contaminate food, water and cooking surfaces. They cause serious damage to building structures and water pipes, and invade roof spaces, walls and floors with the risk of fire from gnawed electric cables. Rats live for about a year and multiply very quickly, with one female rat having 5 litters of up to 8 rats in a year. If ignored, one infestation can lead to many nests within weeks which are very hard to deal with.

The Prevention of Damage by Pests Act 1949 obligates landowners to control rats on their property – see [http://www.east-northamptonshire.gov.uk/info/431/pest\\_control/250/rats](http://www.east-northamptonshire.gov.uk/info/431/pest_control/250/rats) or contact East Northamptonshire Council on 01832-742167 if you want any information on how to identify, prevent or treat rat infestations. There are also private contractors who can advise and carry out pest control operations.

If you see or notice any signs of rats on your property, act immediately to control them.

# What's On



## *Dick Whittington*



By Limelight Scripts, [www.limelightscripts.co.uk](http://www.limelightscripts.co.uk)

At Woodnewton Village Hall

### **Performance dates**

**Thursday 9<sup>th</sup> February 7.30pm**

**Friday 10<sup>th</sup> February 7.30pm**

**Saturday 11<sup>th</sup> February 2.30pm**

**Saturday 11<sup>th</sup> February 7.30pm**

Licensed bar and refreshments

**Tickets cost Adults £8 Children £5**

Tickets on sale from 2<sup>nd</sup> January  
from Anne Galloway

01780 479235 or [woodnewtonplayers@gmail.com](mailto:woodnewtonplayers@gmail.com)



More information visit our facebook page "Woodnewton Players"

## **Hatha Yoga Classes**

### **Mixed Ability**

- Increase flexibility, strength and stamina.
- Learn techniques to help you relax, reduce stress and cultivate mindfulness.

### **WEDNESDAY**

**Woodnewton Village Hall**

**6.30 pm – 7.45 pm**

**(starting 1<sup>st</sup> February 2017 and weekly thereafter)**

### **THURSDAY**

**Nassington Village Hall**

**6.30 pm – 7.45 pm**

**(£7.00 drop in/£24.00 four weekly pass)**

**For more details: call or text Elaine on 01832 280247 (07867 367353)**

**Email: [salayogauk@yahoo.com](mailto:salayogauk@yahoo.com)**

**The Nene Valley Railway** will be running steam services to welcome in the New year. As an antidote to endless Christmas film re-runs why not enjoy a spectacular steam train ride through the frosty landscape.

There will be steam Loco out and about for the 27th and 31st of December, and then to welcome in the new year, there will be more steam services on... 1st 2nd 8th and 9th of January.

On all of these days departures from the Wansford Station (PE8 6LR) will be at 10:00 am 11:45 and 14:00.

For more details 01780 784444

[www.nvr.org.uk](http://www.nvr.org.uk)



# COLUMNISTS

## Woodnewton History Group

Following on from the article on village trades in the last newsletter, here are some old photographs showing where some took place

### THE HORSE & JOCKEY PUBLIC HOUSE



From our research we know that Thomas Hardy was the first landlord in 1847 (it could have been a beer house before that) and Mr Gutteridge was the last, from 1958 to 1966. In 1967, the present occupier purchased the property and converted the building into a private residence.

Taking a look up Main Street, you can see the White Swan with an old thatched cottage alongside it. This was the home of Miss Burgess; its roof caught fire in 1952. Later the property was pulled down.

### THE SADDLERY



Thomas Wells was the first Harness Maker in this property and we know that he arrived from Deeping St James with his bride, Elizabeth, in 1888. In 1894, Thomas was one of the candidates who volunteered for election to the newly formed Parish Council. Thomas died in 1933 and is buried in the churchyard with his wife. Conrad Wells, one of his three children, was born in 1891 and it was Conrad who

took over the business from his father. The property remained in the possession of Conrad Wells until it was purchased by the present occupier. The picture shows Thomas Wells standing in the doorway and the little girl was May Collins who lived further down the road on the south side near the Green.

## THE WHEELWRIGHTS



The Barfield family arrived in Woodnewton in May 1826. Samuel senior, took over as the new Landlord of the Swan Public House. Although, Joseph Barfield's name appears on the sign in this picture, it was actually his father, Samuel junior, who became the first wheelwright in the family. Samuel moved to this house and building after his elder brother, Joseph, who was a tailor, died suddenly in 1852. Samuel and

Sophia, his wife (nee Baxter who was a farmer's daughter from across the road) had four daughters and then four sons; Joseph his sixth child is the one that took over the business when his father retired sometime between 1891 and 1898. So are the people in this picture, Joe and his wife, Mary, and their two daughters, Bertha and Evelyn, around 1905? Notice all the bicycles – the late Colin Skinner, told us several years ago, that not only were the Barfields carpenters, coach builders and wheelwrights they also hired out bicycles at 1s., a week – a necessity to the villagers as there was only one bus a week. Joseph died in 1954 at the ripe old age of 91 years, but we know that he was still working as a coach builder in the 1939 Register. It is thought that this property stayed in the Barfield family until his daughter, Evelyn, died in 1982.

## POST OFFICE AND GENERAL STORES



The Collin family lived in the end cottage next to the old garage on the north side of Main Street in 1911. Although, it wasn't a shop at that time, by 1939, it shows that Emily Collin was now the sub postmistress and ran the general stores. Jack Collin was a market gardener and by 1920 they had opened a shop at their premises, possibly to sell their produce. However, we are in possession of a more modern photograph that

shows the shop had moved to the next house at a later stage. Does this photograph form part of a set with the others and so it must be within the first decade of the 1900's?

# FROM THE EDITOR

**Fireworks** - A generous donation from an anonymous villager made up the amount raised by the Fireworks display to £1,000. Thank you to our benefactor!

The Village Hall Committee

**From Peggy Bierton** - I would like to thank everyone for their concern and get well messages during my recent illness.

**The editors** - We would like to thank Anouk van Royen for her recipe page which has been running for the past few months. School commitments mean she no longer has the time.

If there is any else in the village who would like to take over this slot, we'd love to hear from you. Other ideas for columns are always welcome. Please contact the newsletter by email on [newswoodnewton@googlemail.com](mailto:newswoodnewton@googlemail.com).



**MB GRASSCUTTING**

**FOR ALL YOUR GENERAL  
GARDEN MAINTENANCE**

*ALWAYS PROVIDING A FRIENDLY, RELIABLE AND CONSISTENT SERVICE*

**NO JOB TOO SMALL, GIVE ME A CALL!!**

For a free quote please call Mark on 07491 683540 / 01780 470268 or email at [mbgrasscutting@gmail.com](mailto:mbgrasscutting@gmail.com)



# launch evening...

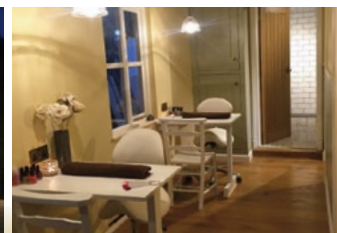
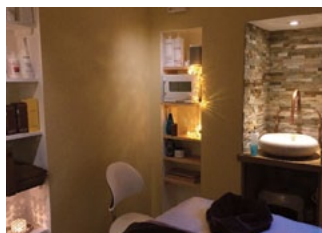


'and so beautiful...' are delighted to announce the opening of our second Beauty, Holistic and Hydrotherapy salon on Saturday 14th January in Woodnewton, near Oundle.

Join us to celebrate at our Launch Evening on **Thursday 12th January from 1600 to 2100**. Have a sneaky peek at what we have to offer and meet our team of Therapists, whilst enjoying canapés and a glass of fizz.

If you would like to attend our launch evening, please email [rebecca@andsobeautiful.co.uk](mailto:rebecca@andsobeautiful.co.uk) to confirm. This will help with catering. As a thank you for emailing your confirmation you will receive a goody bag on the night and be entered into our draw for a selection of products and treatments.

If you would like more information please call Rebecca on 07905 926 902 or email [rebecca@andsobeautiful.co.uk](mailto:rebecca@andsobeautiful.co.uk). **Willowbrook Farmhouse, Woodnewton, Nr. Oundle PE8 5EG.**



Gift vouchers bought on the night (available for both salons) have a 10% discount on orders of £30 or more off any treatment if used before March 2017.



**Woodnewton salon:** Willowbrook Farmhouse, Woodnewton PE8 5EG  
**Peterborough salon:** Cherry Orton Road, Peterborough PE2 5EQ

Wendy's Wood.  
Woodnewton.

## Logs For Sale.

Free delivery within 16 miles  
of Woodnewton.

Free Stacking.

Logs cut to any length.

Load 1.75cu.m £150



Half Load £80.00

Contact Wendy.

Phone 01780 470062

Mobile 078 1422 4805

winterrottie@yahoo.com

**cope**  
ELECTRICAL SERVICES

Domestic Commercial Solar Pv

Andy Cope

Tel : 07905 138846

email : [cope.electricalservices@yahoo.co.uk](mailto:cope.electricalservices@yahoo.co.uk)

[www.cope-electricalservices.co.uk](http://www.cope-electricalservices.co.uk)

Unit 10 Elliott's Yard, Kingscliffe

Peterborough PE8 6ER



**VICTORIA NEWTON**

[www.victoria-newton.co.uk](http://www.victoria-newton.co.uk)

Made-to-measure curtains, blinds and soft furnishings perfectly suited to your home. With a large fabric library available, impeccable hand-sewn skills and a friendly service from a studio in Woodnewton village we offer:

Roman Blinds • Hand Pleated Headings • Rollers • Venetians  
Pelmetts • Valances • Headboards • Poles and Trimmings

Stockist of Cabbages & Roses, Sanderson, Prestigious Textiles,  
Ian Mankin, James Hare Silks, Moon Wools and more.

To book a no obligation measuring-up and quotation call today.

T : 01780 479140 | E : [enquiries@victoria-newton.co.uk](mailto:enquiries@victoria-newton.co.uk)

## **GRIFFINS SOLID FUEL MERCHANTS**

**The Old Station Yard, Nassington**

### **Suppliers of:**

- Coal and Smokeless Fuels
- Cash & Carry Pre-Packs
- Flo Gas
- Coal Bunkers
- Charcoal

**Coal Yard Tel : 01780 782540**

**Office: 12 Church Hill, Castor Tel: 01733 380470**

## **JC.HEATING SERVICES [www.jc-heatingservices.co.uk](http://www.jc-heatingservices.co.uk)**

8 Black Swan Spinney, Wansford, PE8 6LE

Tel: 01780 781778 Mob: 07729036942

Email: [jo.childs@jc-heatingservices.co.uk](mailto:jo.childs@jc-heatingservices.co.uk)

- Oil Boilers
- Gas and LPG (Calor) Boilers, Cookers and Fires
- Service, Breakdown, Repairs
- New Installations
- Oil Tank Replacements

OFTEC Registered Business CORGI Gas Safe Register 230429

## **Village Pizzas**

**Freshly made & delivered to your door.**

View our Menu at

**[www.villagepizzas.co.uk](http://www.villagepizzas.co.uk)**

Tue -Sat 6pm 'til the phone stops ringing

**01780 784587**

## USEFUL NUMBERS AND INFORMATION

For more see the village website: **[www.woodnewtonhub.co.uk](http://www.woodnewtonhub.co.uk)**

**Village Hall Booking** Abbie Smith 01780 470691

**Woodnewton Neighbourhood Watch** [woodnewtonnw@googlemail.com](mailto:woodnewtonnw@googlemail.com)

**Police** 101 (non emergency report, suspicious behaviour and enquiries)

### **Doctors Surgeries**

Oundle	01832 275375	Wansford	01780 782342
--------	--------------	----------	--------------

### **Veterinary Surgeries**

Oundle	01832 273521	Yarwell	01780 783910
--------	--------------	---------	--------------

**Woodnewton Mobile Library** 11:45 - 12:10 Orchard Crescent every third Wednesday of the month.

## DIARY DATES

### **January**

Monday 9th	Parish Council	pg. 1
Thursday 12th	Launch evening for ...and so Beautiful	pg. 12

### **February**

Wednesday 1st	New yoga class	pg. 7
Thursday 9th - Saturday 11th	Dick Whittington	pg. 6

## NEWSLETTER & WEBSITE CONTACTS

**Editorial Team:** Liz Holland, Jane Martin, June Moore; John Russell, Ivan Walker, David Webb

**Advertising:** Ivan Walker, Tel 470438

**Contributions:** Please send articles by email whenever possible to **[newswoodnewton@googlemail.com](mailto:newswoodnewton@googlemail.com)** Handwritten / non-electronic contributions can be delivered or sent to June Moore, 5 Lindsey Close.

**Closing date for all copy 14th of previous month.**

The Newsletter is edited and published by Liz Holland, 26, Orchard Lane, Woodnewton.

Any views expressed in the Newsletter are not necessarily those of the Parish Council unless otherwise stated.

**VILLAGE WEBSITE:** **[www.woodnewtonhub.co.uk](http://www.woodnewtonhub.co.uk)**

**Website Manager:** Matthew Roberts. Email: [info@woodnewtonhub.co.uk](mailto:info@woodnewtonhub.co.uk)



